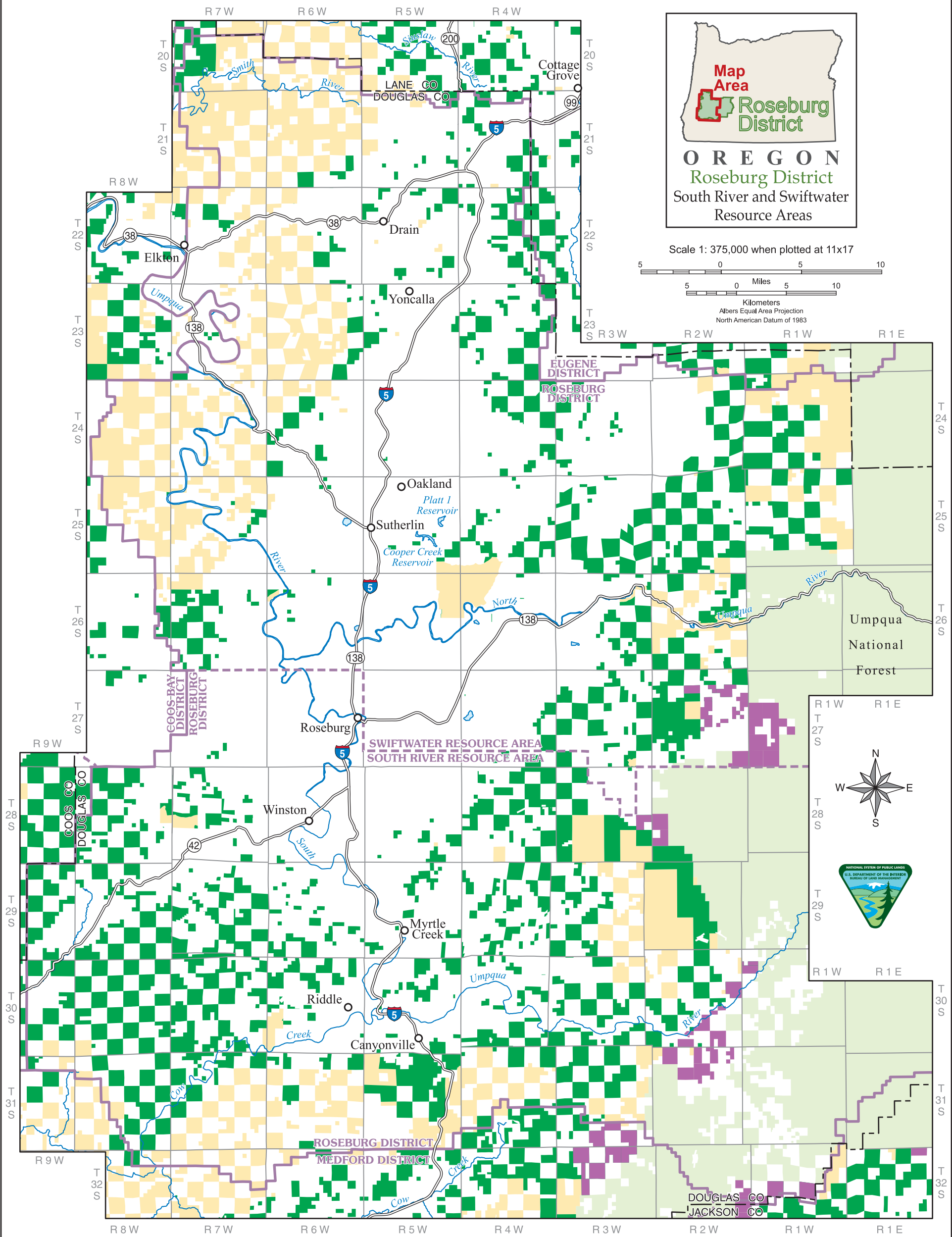


O&C Land Grant Act of 2014

Forestry Emphasis Areas

South River and Swiftwater Resource Areas of the Roseburg District

This map prepared at the request of Senator Ron Wyden
November 3, 2014



No warranty is made by the Bureau of Land Management as to the accuracy, reliability, or completeness of these data for individual or aggregate use with other data. Original data were compiled from various sources. This information may not meet National Map Accuracy Standards. This product was developed through digital means and may be updated without notification.

M14-08-02